

Triangle

BEST OF GUIDE 2017

HOMIE

DESIGN & DECOR®





A symmetrical arrangement of buttery soft leather tufted sofas, artwork, and Lillian August chests are interrupted by a pop of color from the long green velvet bench placed midroom. The jaw-dropping fireplace by Dickerson Hearth Products and intricate coffered ceiling adds to the symmetrical feel in this main living space.



TECHNOLOGY TREASURE TROVE

*The integration
of technology and
interior design weaves
through every room of
The Lodge at Avalaire.*

By Dana W. Todd

Photography by Woody Howard
with New View Photography

Close your eyes and think of a heavenly retreat. For some, the Grove Park Inn in Asheville may come to mind. For many recent Triangle Parade of Homes attendees, that luxurious landmark is a fitting comparison for Bost Custom Homes' newest showcase house – The Lodge at Avalaire.

Rex Bost and his multi-disciplinary team built the imposing 6,800-plus square-foot High Country Craftsman home to showcase and introduce the latest technology and design techniques to the Triangle region.

“Every area of The Lodge is stepped up from a traditional build,” Evan Bost says. “From new products and techniques to healthy building features.”

One of the home's most technologically exciting and efficient features is lighting, which enhances every nook and cranny of this home.





A Century Furniture dining table surrounded by Lee Industries dining chairs anchor the room, with the wine cellar and its LED-backlit floor off to the side for easy access to beverages. Phillip Jeffries grasscloth wallcovering and an ivory leather credenza by Theodore Alexander are conversation starters. The glass doors along the back wall fold all the way to one side, letting guests seamlessly traverse between indoor and outdoor dining spaces.

“We are proud The Lodge is one hundred percent LED illuminated,” Bost says, including a one-of-a-kind lighted wine cellar floor. The quartzite stone floor from Absolute Stone is backlit with remote-controlled LED rope lighting that is color adjustable. Exotic lighting patterns shine through the floor in the wine room, as well as throughout the master bathroom, underneath the treads of the main staircase, and outside around the raised pool ledge. From twinkling pinpoint lights to glowing strips, the capabilities of LED technology enhance the architectural features of The Lodge.

“The decorative hanging light fixtures on the main floor were carefully chosen to be unique but still relate, a challenge since many rooms are visible at once by standing in a central location,” interior designer Donna Davis of Design Works Studio says. The striking, expansive fixtures also provide another opportunity to mix metals throughout the home.

LED lighting is not always necessary, though, as the home has eight skylights and five sun tunnels to capture, concentrate, and bring in natural lighting. Four of the skylights with motorized shades are in the great room, snuggled between the massive wooden trusses that decorate the ceiling. Remote-controlled and automated motorized shading covering the two-story windows in the theater/game room add another eco-friendly element to the lighting mix. And thirty-six solar panels on top of the covered lounge area by the pool and cabana bathhouse power, on average, forty percent of the house.

The Lodge’s technological savvy is not limited to lighting, however, as the entire home is powered by a custom Control4 home automation system from Audio Advice that automates control of lighting, window shades, whole-home audio and video, temperature, security system, and a baby grand piano integrated with the audio system.

Some rooms have special technology features, such as the master closet, where two recessed





Top Left: The kitchen, with its adjacent smaller prep kitchen, features Crystal Cabinet Works custom walnut cabinetry from Kitchen & Bath Galleries and a farmhouse style sink from R. Jacobs Fine Plumbing & Hardware.

Top Right: The family room, with its soaring ceiling, flows openly into the dining area. The highlight of this room is the Currey & Company lighting fixture, which is just as beautiful viewed from above on the Juliet balcony as below on the family room sofa.

Bottom Left: The raised and tooled mortar joints in the exterior stonework by Custom Stone NC require an extra step by the workmen but results in a textured surface that provides dramatic shadow lines when lit at night.

Bottom Middle: The brick flooring from General Shale and faux bois driftwood cabinets in the laundry room are continued into the scullery, where some of the bottom cabinets are eliminated to make space for rolling service carts. This working kitchen spares no details, featuring porcelain backsplash, a farm sink, and a commercial-style pull-down Kohler faucet.

Bottom Right: Faux bois driftwood cabinets, brick flooring, and Sherwin-Williams Morning Fog on the walls work together to make this workhorse of a room serene.



Top: A unique Phillip Jeffries veneered wood wallcovering draws attention to the wall behind the Hickory White bed. The wallcovering is made with laser cut wood rolls overlaid with metallic strips, which warm up the room. The night stands are from Swaim, the bench is from Lee Industries, and the settee is from Hickory White. When designer Donna Davis could not find artwork with the appropriate colorway, she painted the curved metal painting on the wall herself. *Bottom:* The largest single piece of glass ever installed in a residence by Carolina Glass & Mirror separates the master bathroom's wet area from the double vanities. A freestanding Kohler tub is softened by the addition of loose river stones around its base, surrounded by a restful gray wall color with hints of a plum undertone and tilework from Triangle Tile & Stone that can only be described as heavenly.

luggage hatches in the floor – one remotely controlled and motorized and the other operable via assistive springs – safely tuck away empty suitcases between trips. Motorized wardrobe elevators store off-season clothing high above the prime closet real estate and can be lowered to a reachable height as needed at the

press of a button.

A new product, folding panel glass doors that clasp together at a ninety-degree corner, can be pushed back to completely open the dining room to a covered veranda featuring an outdoor dining table and outdoor kitchen surrounded by retractable phantom



Top: Custom built-in bunk beds expand the sleeping capacity of the room and use space as efficiently as possible. Shiplap is a more durable wallcovering choice for children, and an enclosed ceiling fan keeps the space safe for those using the top bunks.

Right: The study features Stark antelope print carpet, Lutron motorized shades, a Century Furniture desk, Hickory White lounge chairs, and Visual Comfort light fixture. Artwork by local artist Joann Couch adds a vibrant element to the otherwise neutral setting.



screens.

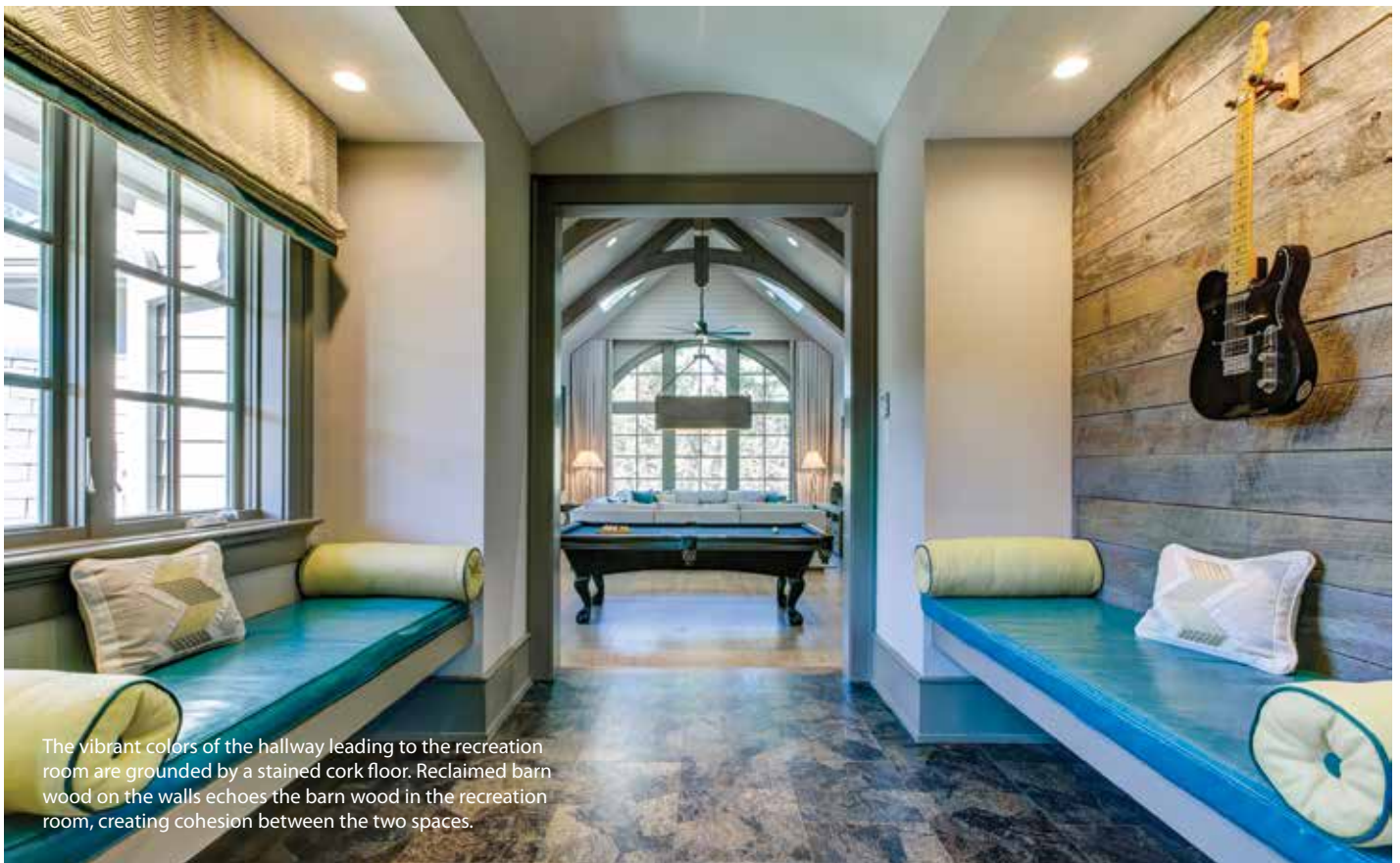
“The threshold between indoor and outdoor dining is flush, so the transition from hardwood floors to the patio’s stone is inconspicuous,” Bost says. “You almost don’t realize you have stepped outside into the open air. This area won the special

feature award from the Parade judges.”

High-performance features on the outside make the property run more sustainably. A 3,500-gallon rainwater harvesting system collects rainwater runoff from the gutters and yard and filters it for irrigation use. Spray foam insulation and sealed attic

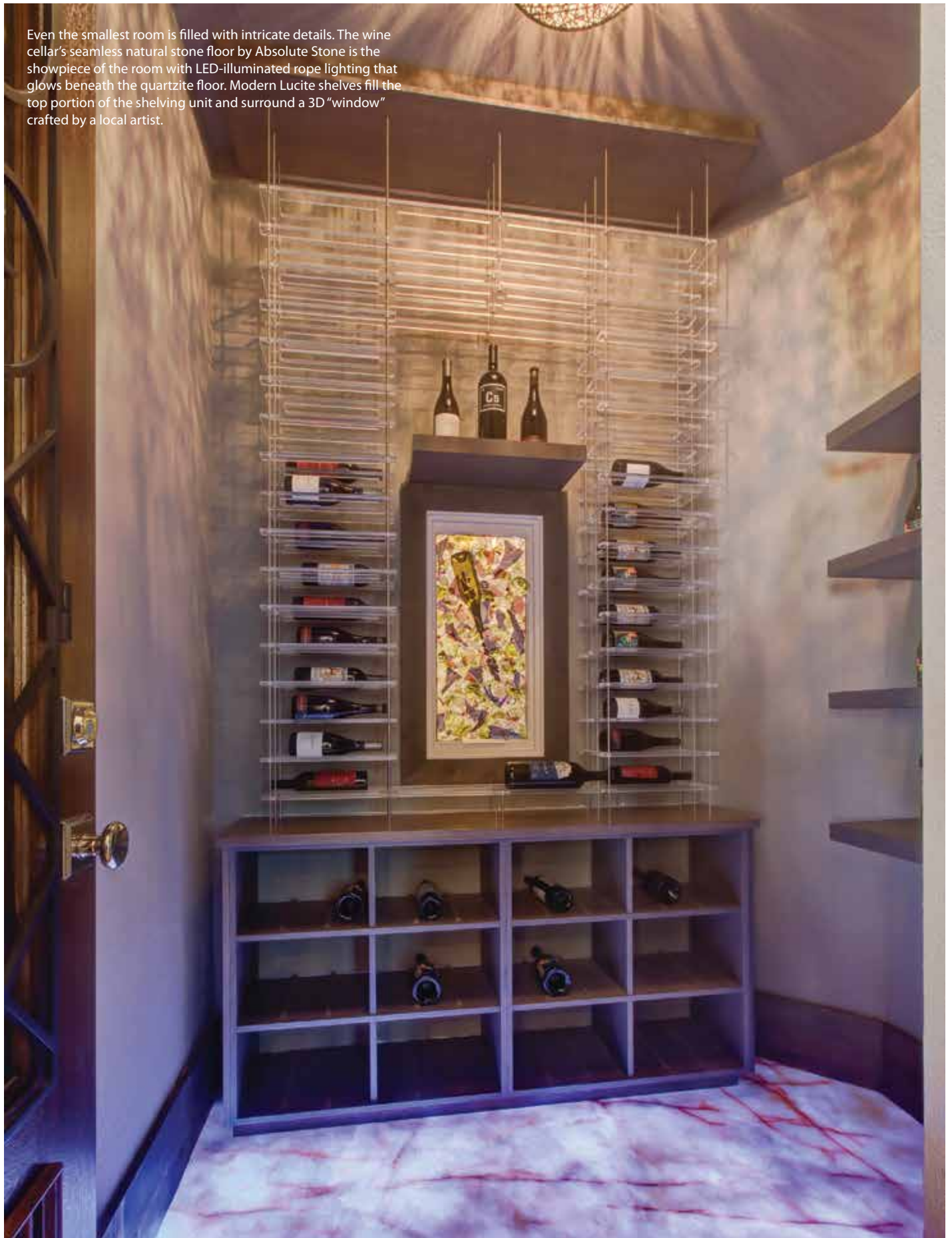


Oversized is the theme of the recreation/theater room, where a seven-foot tall artistic photograph of Pasha the horse draws immediate attention. An expansive fifteen-foot sectional sofa provides a space for everyone to spread out and watch the movie when the Lutron automated shades lower beneath their hidden compartment over the arched windows. Reclaimed barn wood provides the natural, earthy feel that permeates the entire home.



The vibrant colors of the hallway leading to the recreation room are grounded by a stained cork floor. Reclaimed barn wood on the walls echoes the barn wood in the recreation room, creating cohesion between the two spaces.

Even the smallest room is filled with intricate details. The wine cellar's seamless natural stone floor by Absolute Stone is the showpiece of the room with LED-illuminated rope lighting that glows beneath the quartzite floor. Modern Lucite shelves fill the top portion of the shelving unit and surround a 3D "window" crafted by a local artist.





The same exterior stone, Mountain Weatherface natural stone from Custom Stone NC, is used again on the patio's fireplace and floor. A grill top tucked into the corner features a leathered granite surface. A sectional sofa with outdoor fabric provides space to entertain a crowd.



and crawl spaces create a tight and continuous barrier around the home's perimeter. Energy Star® certified appliances and heating/cooling system along with a whole-house dehumidifier optimizes the house's environment at all times, and argon-filled insulated windows ensure that environment is maintained. A whole house reverse osmosis system purifies all water used in the home, and no-VOC and no-formaldehyde paint and cabinetry further increase health and sustainability. The Lodge is an Energy Star® Certified Home and a Bronze Certified National Green Building Standard Home.

With all of these technology features throughout the house, Bost Custom Homes turned to designer Donna Davis to integrate the technology into a beautiful, comfortable, and livable atmosphere. She focused on bringing in lots of materials and textures, continuing the tech theme by showcasing the latest materials like the bar's glass herringbone backsplash tile from Triangle Tile & Stone, a way to integrate an organic feel with its silver and slate blue metallic wood grain pattern.

"The color palette is not the typical gray and white," Davis says, "but soft and blended tones of taupe, ivory, and slate blue, which makes The Lodge inviting, organic, and earthy. Walnut accents and features such as antelope print carpeting in the study and leathered quartzite kitchen countertops make the space feel masculine yet casual."

The Lodge at Avalaire features scores of personalized touches that complement the latest technology sprinkled liberally throughout every room, nestled in the last remaining planned luxury community in the northern Raleigh area. The result is a showcase masterpiece that anyone would be proud to call home.◆



Water cascades over the infinity pool edge to a lower pool basin starring an underwater fire feature by Dickerson Hearth Products. A cabana bath house, complete with a changing room and outdoor shower, provides privacy on the west.